

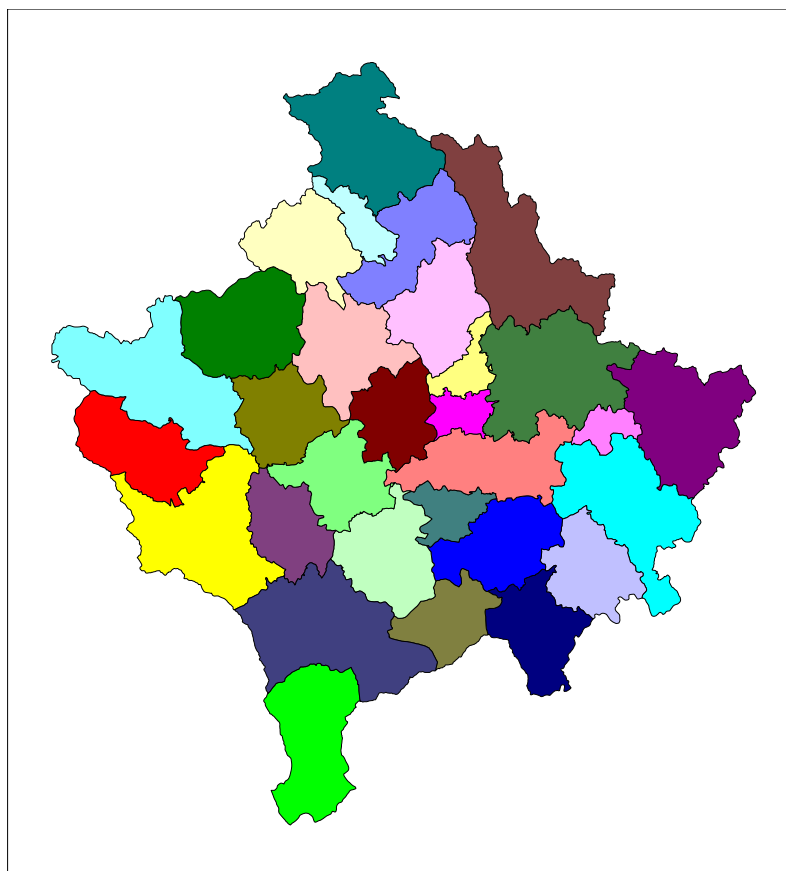


Republika e Kosovës
Republika Kosova-Republic of Kosovo
Qeveria - Vlada - Government

Ministria e Administratës Publike - Ministarstvo Javne Uprave - Ministry of Public Administration

Series 2: Agriculture and Environment Statistics

Output Price Index and Prices in Agriculture (January – March 2010)



Enti i Statistikës së Kosovës
Zavod za Statistiku Kosova
Statistical Office of Kosovo

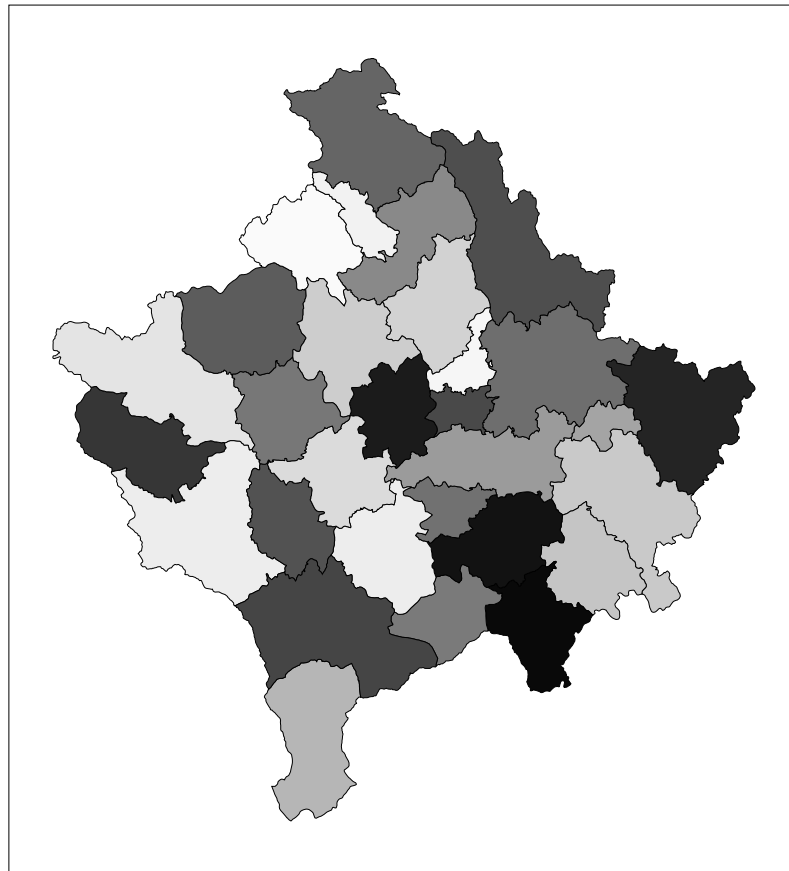


Republika e Kosovës
Republika Kosova-Republic of Kosovo
Qeveria - Vlada - Government

Ministria e Administratës Publike - Ministarstvo Javne Uprave - Ministry of Public Administration

Series 2: Agriculture and Environment Statistics

Output Price Index and Prices in Agriculture (January – March 2010)



Enti i Statistikës së Kosovës
Zavod za Statistiku Kosova
Statistical Office of Kosovo

Publisher: Statistical Office of Kosovo (SOK)
Publication date: May 2010
© Statistical Office of Kosovo
Reproduction is authorized when source is indicated only
Printed by the K.G.T, Pristina, Kosovo

More information is available on Internet
www.ks-gov.net/esk

P r e f a c e

Statistical Office of Kosovo respectively Agriculture and Environment Statistics Department started to collect data on prices for agriculture products in November 2003. In the beginning, prices were collected for a limited number of items. At the moment prices for 64 different items concerning agricultural output are collected. The plan for the future is to both increase the number of products and also to complement it with an Input Price Index.

This is the twelfth publication on Output Price Index and Average Absolute Prices for agriculture products produced by Statistical Office of Kosovo (SOK). In this publication, Output Price Index and prices for some major agriculture products are presented.

SOK is grateful to the Swedish International Development Cooperation Agency (SIDA) for their support of build up the agro monetary statistics system. SOK also is grateful for their corporation of all co-workers at the regional offices, other respondents of data collection as: agriculture farms, industrial and trade enterprises etc.

Especially grateful to Swedish price statistics experts Mr. Tomas Eriksson, Mr. Daniel Persson, Mr. Jimmie Enhall and Statistics Sweden Long-term consultant Mrs. Milva Ekonomi and others who directly or indirectly assisted on finalisation of this publication.

Suggestions, proposals and remarks for this publication are welcome and can be sent to:
E- mail: agriculture@ks-gov.net

This publication was prepared by following personnel:

Bajrush Qevani – Director of department,
Haki Kurti – Chief of division,
Violeta Arifi – Gashi – Chief of section,
Kademsha Bajramaga – Statistical officer
Ahmet Cakolli - Design

May, 2010

Acting Chief Executive Officer, SOK
Nait Vrenezi

Abbreviations and Acronyms

SOK	Statistical Office of Kosovo
EAA	Economic Accounts for Agriculture
API	Agriculture Price Index
EU	European Union
SIDA	Swedish International Development Cooperation Agency
Q1	First quarter

Key to symbols

-	Zero
.	Not applicable
0	Magnitude less than half of unit used
‰	Promile

In the tables where figures have (weight) have been rounded to the nearest final digit might be a slight discrepancy in the sum.

Contents

	Page
Quarterly Agricultural Output Price Index, 2005 – 2010.....	7
Monthly Agricultural Output Price Index.....	8
Changes in Agricultural Output Price Index, percent.....	9
Absolute average price in euro for some major agriculture products.....	10
Methodology.....	12
Questionnaire.....	14

Output Price Index for agriculture products

The publication includes data from January to March 2010. To make comparisons and see changes there are also data from first quarters 2005 to 2010 (2005=100).

This publication is based on collection of prices for domestic products in Kosovo. The price collection was carried out at markets, farms and other places where prices on agriculture products are available.

The products which make up the base for the Output Price Index are divided into two main groups: Crop- and Animal Output. Within Crop Output, prices are collected under the following groups; Cereals, Forage plants, Vegetables, Potatoes and Fruits. Within Animal Output, prices are collected for Animals and Animal Product. For Animals prices are collected for four categories; Cattle, Sheep, Pigs and Poultry. These prices are based on the live weight of the animals. Within animal products prices are collected for Milk, Eggs and Honey. All prices are calculated in Euro and the measurement unit is in kg, liter and piece.

Figure 1, 2 and 3 shows Monthly Output Price Index from January - December 2009 and first quarter 2010 for Total Output as well as for Crop and Animal Output (2005 = 100).

In the first quarter 2010 the index for Animal Output has decreased with -11.0 % compared to the same period 2009. The index for Crop Output has decreased with -12.3 % between first quarter 2010 and first quarter 2009. Total Output Index has also decreased during the period with -11.7 %.

Figure 1: Monthly Output Price Index for Crop Output, January – December 2009 and first quarter 2010 (2005=100)

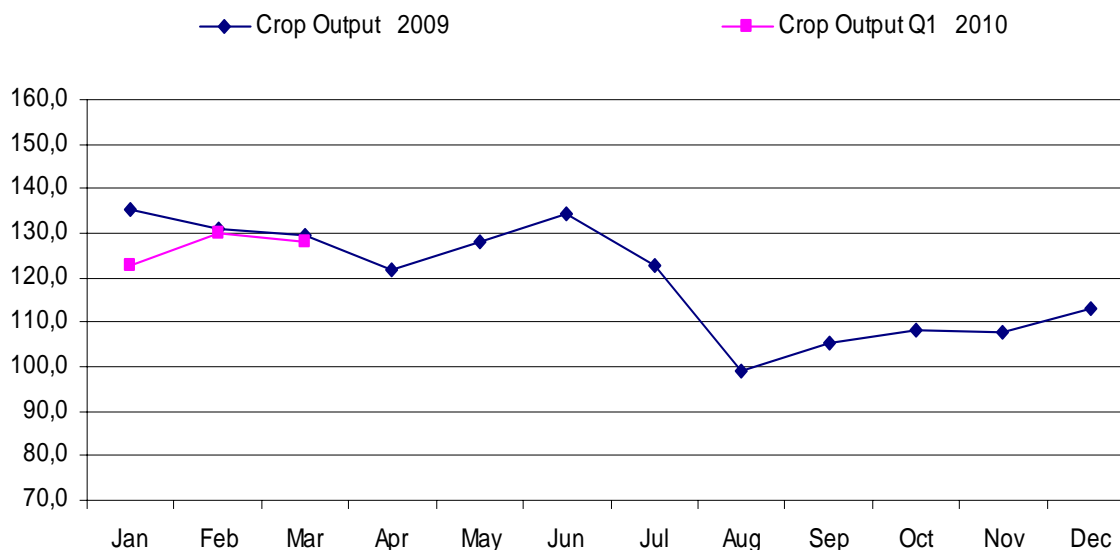


Figure 2: Monthly Output Price Index for Animal Output, January – December 2009 and first quarter 2010 (2005 = 100)

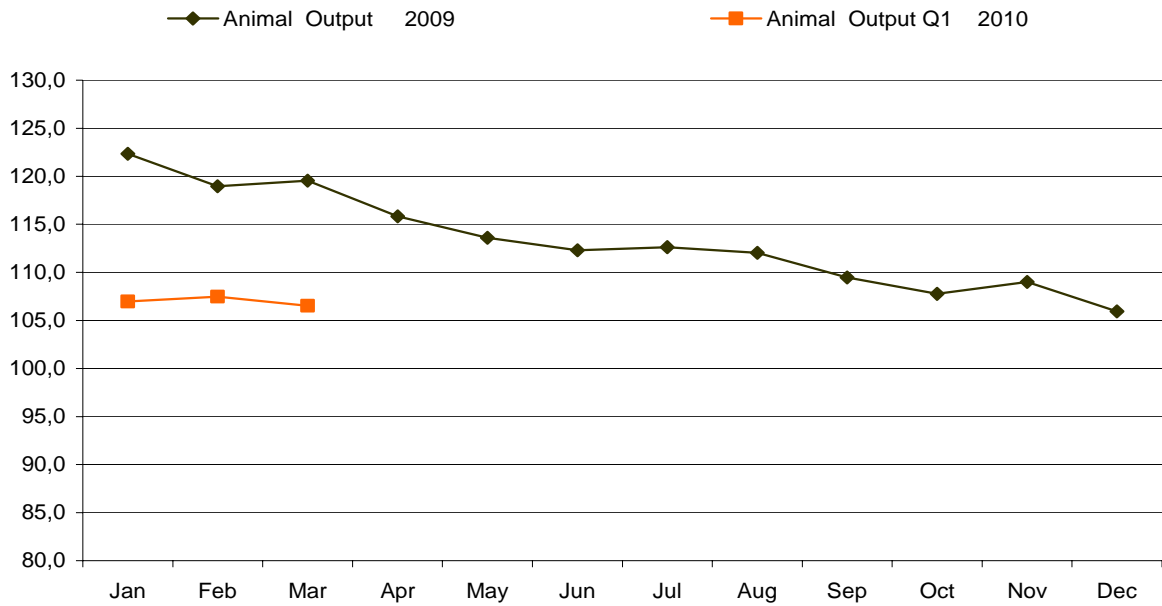
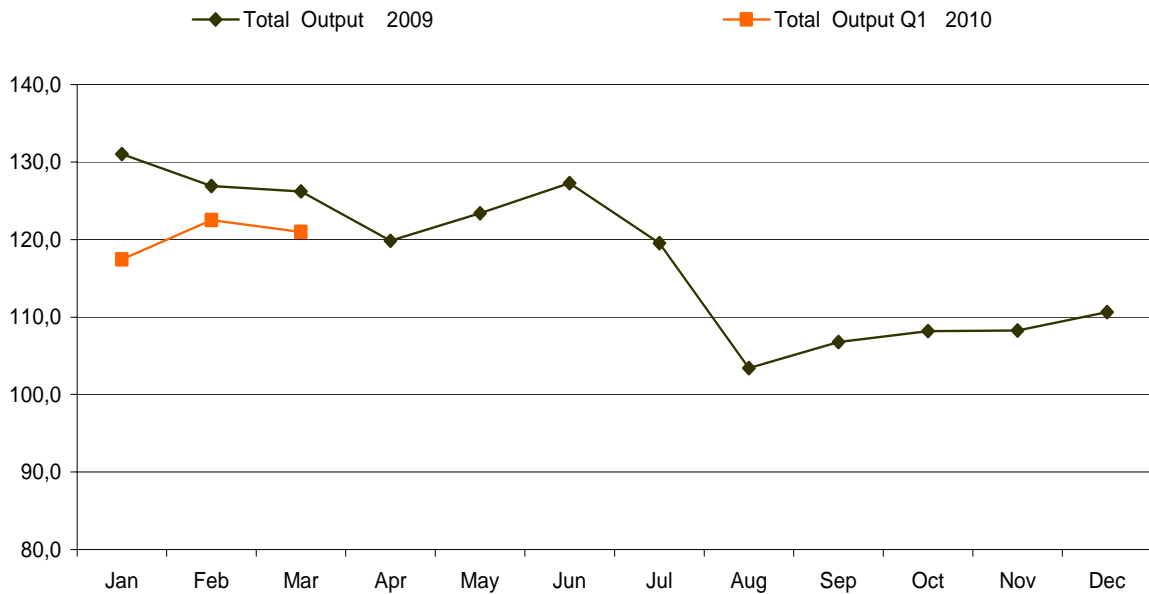


Figure 3: Monthly Output Price Index for Total Output, January – December 2009 and first quarter 2010 (2005=100)



Quarterly Agricultural Output Price Index

Table 1: Quarterly Agricultural Output Price Index, first quarter 2005 - 2010 (2005=100)

API code	Description	Q1-2005	Q1-2006	Q1-2007	Q1-2008	Q1-2009	Q1-2010
010000	CEREALS (including seeds)	108,2	95,0	111,6	216,1	154,2	109,5
011000	Wheat and spelt	104,9	100,5	126,4	243,8	154,5	109,6
011100	Soft wheat and spelt	104,9	100,5	126,4	243,8	154,5	109,6
012000	Rye and meslin	104,9	100,5	126,4	240,3	190,1	153,5
013000	Barley	103,8	100,7	126,1	243,1	205,2	130,6
013200	Malting barley	103,8	100,7	126,1	243,1	205,2	130,6
014000	Oats and summer cereal mixtures	104,9	100,5	126,4	239,0	176,9	128,3
015000	Grain maize	113,1	87,0	90,7	177,0	137,6	102,0
030000	FORAGE PLANTS	111,9	99,4	114,0	203,5	166,4	125,9
031000	Fodder maize	113,8	87,3	90,8	176,8	138,7	102,4
032000	Fodder root crops (including forage beet)
039000	Other forage plants	111,9	99,4	114,1	203,6	166,5	126,1
040000	VEGETABLES AND HORTICULTURAL PRODUCTS	98,6	115,9	109,7	147,1	128,0	137,7
041000	Fresh vegetables	98,6	115,9	109,7	147,1	128,0	137,7
041100	Cauliflower
041200	Tomatoes
041900	Other fresh vegetables	98,6	109,9	105,1	108,8	89,2	80,1
042000	Plants and flowers
050000	POTATOES (including seeds)	93,8	113,6	124,3	131,0	118,9	115,9
051000	Potatoes for consumption	93,8	113,6	124,3	131,0	118,9	115,9
060000	FRUITS	101,7	107,5	112,4	132,0	112,2	104,2
061000	Fresh fruit (excluding citrus fruit and grapes)	101,7	107,5	112,4	132,0	112,2	104,2
061100	Dessert apples	89,5	105,7	94,9	118,0	98,0	91,3
061200	Dessert pears	174,0	120,4	186,0	200,3	180,1	119,0
061300	Peaches
061900	Other fresh fruit, nuts and dried fruit	101,4	106,4	125,1	137,9	119,2	130,9
062000	Citrus fruit
063000	Tropical fruit
064000	Grapes
100000	CROP OUTPUT (010000 TO 090000), including fruits (060000) and vegetables (040000)	101,5	106,9	115,9	167,3	136,7	119,8
101000	CROP OUTPUT (010000 TO 090000), excluding fruits (060000) and vegetables (040000)	102,4	104,3	117,8	175,1	140,5	115,6
110000	ANIMALS	97,7	103,2	99,7	100,9	122,7	113,8
111000	Cattle	97,2	104,7	101,7	99,0	122,2	111,9
111100	Cattle excluding calves	97,2	104,7	101,7	99,0	122,2	111,9
111200	Calves	97,2	104,7	101,7	99,0	122,2	111,9
112000	Pigs	95,2	103,3	97,7	119,2	141,3	129,4
113000	Equines	97,7	103,2	99,7	100,9	122,7	113,8
114000	Sheep and goats	100,1	96,8	91,4	99,8	115,9	112,1
115000	Poultry	97,9	107,8	107,6	137,4	161,6	167,3
115100	Chickens	97,9	107,8	107,6	137,4	161,6	167,3
115900	Other poultry	97,9	107,8	107,6	137,4	161,6	167,3
119000	Other animals
120000	ANIMAL PRODUCTS	100,7	102,3	105,6	121,8	117,0	97,8
121000	Milk	102,2	106,7	101,6	121,9	122,3	103,1
121100	Cows' milk	102,2	106,7	101,6	121,9	122,3	103,1
121900	Other milk types
122000	Eggs	98,7	95,7	112,8	125,5	111,6	88,3
129000	Other animal products	98,5	101,2	98,5	97,8	100,5	106,7
130000	ANIMAL OUTPUT (110000+120000)	99,0	102,8	102,2	109,8	120,3	107,0
140000	AGRICULTURAL GOODS OUTPUT (100000+130000), including fruits (060000) and vegetables (040000)	100,2	104,8	108,8	137,7	128,2	113,2
141000	AGRICULTURAL GOODS OUTPUT (101000+130000), excluding fruits (060000) and vegetables (040000)	100,4	103,4	108,7	136,7	128,6	110,5

Monthly Agricultural Output Price Index

Table 2: Monthly Agricultural Output Price Index, January – March 2010 (2005 =100)

Item Code	Groups	Weight in %	Weight in 1000 Euro	2010		
				Jan	Feb	Mar
0 1	Cereals	88	8 018	110,8	109,6	109,0
0 1.1	Wheat	45	4 105	107,8	110,8	110,8
0 1.3	Barley	10	904	138,6	126,6	126,6
0 1.5	Maize	31	2 818	104,4	101,1	100,2
0 1.9	Other cereals	2	191	139,0	127,2	116,7
0 3	Forage plants	63	5 726	133,3	126,5	115,4
0 3.1	Fodder maize	0	36	104,6	101,3	100,4
0 3.9	Other forage plants	62	5 690	133,4	126,6	115,5
0 3.9.1	Hay	29	2 682	143,0	133,3	122,2
0 3.9.2	Straw	14	1 234	119,6	127,5	122,4
0 3.9.9	Other forage plants ;others	19	1 774	123,6	116,2	103,4
0 4	Vegetables	351	31 942	128,0	146,9	139,6
0 4.1	Fresh vegetables	351	31 942	128,0	146,9	139,6
0 4.1.2	Tomatoes	30	2 716	.	.	.
0 4.1.9	Other fresh vegetables	321	29 226	128,0	146,9	139,6
0 4.1.9	Pepper	211	19 234	.	.	.
0 4.1.9.1	Cabbage	24	2 209	140,0	152,0	.
0 4.1.9.4	Cucumbers	11	1 009	.	.	.
0 4.1.9.6	Onions	19	1 729	162,3	216,4	170,0
0 4.1.9.7	Beans	31	2 825	118,4	116,6	116,6
0 4.1.9	Water melon	10	936	.	.	.
0 4.1.9.9.9	Other fresh vegetable;other	14	1 283	70,6	74,2	148,6
0 5	Potatoes	121	10 989	113,6	113,6	122,8
0 6	Fruits	50	4 567	112,7	88,8	108,7
0 6.1	Fresh fruits	23	2 108	112,7	88,8	108,7
0 6.1.1	Apple	8	704	95,1	87,3	.
0 6.1.2	Pears	3	248	119,0	.	.
0 6.1.9	Other fresh fruit	13	1 156	141,0	100,4	108,7
0 6.1.9.2	Plums	5	491	.	.	.
0 6.1.9.4	Nuts and dried fruit	3	306	144,9	108,7	108,7
0 6.1.9.9	Other fresh fruits; other	4	359	60,8	66,3	.
0 6.4.1	Desert grapes	15	1 354	.	.	.
0 6.4.9	Wine grapes	12	1 105	.	.	.
10	Crop Output	673	61 241	122,5	129,8	128,0
11	Animals	188	17 086	113,9	114,6	113,0
11.1	Cattle	140	12 739	112,6	113,0	110,1
11.2	Pigs	9	791	123,7	132,2	132,2
11.4	Sheep	34	3 129	111,1	111,1	114,1
11.5	Poultry	4	345	168,4	165,5	167,9
11,9	Other animals (horses)	1	82	113,9	114,6	113,0
12	Animal Products	140	12 722	97,6	97,9	97,8
12.1	Milk	79	7 194	101,6	103,1	104,7
12.2	Eggs	52	4 760	106,7	106,7	106,7
12.9	Other animal products	8	768	90,2	88,7	86,0
13	Animal Output	327	29 808	107,0	107,5	106,5
14	Total Output	1 000	91 049	117,4	122,5	121,0

Changes in Output Price Index, percent

Table 3: Changes in Output Price Index for same month, January– March 2009 / 2010

(2005 =100), percent

Item Code	Groups	Weight in %	Weight in 1000 Euro	Jan- 09 / Jan - 10 % change	Feb - 09 / Feb - 10 % change	Mar - 09 / Mar - 10 % change
0 1	Cereals	88	8 018	-31,5	-28,7	-26,0
0 1.1	Wheat	45	4 105	-31,8	-27,4	-26,7
0 1.3	Barley	10	904	-38,9	-34,9	-34,9
0 1.5	Maize	31	2 818	-27,3	-28,3	-20,8
0 1.9	Other cereals	2	191	-29,1	-26,4	-24,2
0 3	Forage plants	63	5 726	-22,9	-28,9	-18,8
0 3.1	Fodder maize	0	36	-27,3	-28,3	-20,8
0 3.9	Other forage plants	62	5 690	-22,9	-28,9	-18,8
0 3.9.1	Hay	29	2 682	-23,0	-30,3	-20,7
0 3.9.2	Straw	14	1 234	-30,0	-22,1	-12,6
0 3.9.9	Other forage plants;others	19	1 774	-20,0	-28,4	-17,2
0 4	Vegetables	351	31 942	-1,1	17,1	7,7
0 4.1	Fresh vegetables	351	31 942	-1,1	17,1	7,7
0 4.1.2	Tomatoes	30	2 716	.	.	.
0 4.1.9	Other fresh vegetables	321	29 226	-1,1	17,1	7,7
0 4.1.9	Pepper	211	19 234	.	.	.
0 4.1.9.1	Cabbage	24	2 209	2,9	18,8	.
0 4.1.9.4	Cucumbers	11	1 009	.	.	.
0 4.1.9.6	Onions	19	1 729	40,0	100,0	57,1
0 4.1.9.7	Beans	31	2 825	-19,0	-18,7	-20,3
0 4.1.9	Water melon	10	936	.	.	.
0 4.1.9.9.9	Other fresh vegetable;other	14	1 283	-16,0	-16,4	25,2
0 5	Potatoes	121	10 989	-5,1	-4,1	4,2
0 6	Fruits	50	4 567	-6,3	-9,6	0,0
0 6.1	Fresh fruits	23	2 108	-6,3	-9,6	0,0
0 6.1.1	Apple	8	704	-2,9	-10,9	.
0 6.1.2	Pears	3	248	-33,9	.	.
0 6.1.9	Other fresh fruit	13	1 156	12,8	0,5	0,0
0 6.1.9.2	Plums	5	491	.	.	.
0 6.1.9.4	Nuts and dried fruit	3	306	13,0	0,0	0,0
0 6.1.9.9	Other fresh fruits; other	4	359	5,6	3,8	.
0 6.4.1	Desert grapes	15	1 354	.	.	.
0 6.4.9	Wine grapes	12	1 105	.	.	.
10	Crop Output	673	61 241	-9,4	-0,7	-1,1
11	Animals	188	17 086	-7,0	-5,2	-9,4
11.1	Cattle	140	12 739	-8,1	-5,9	-11,3
11.2	Pigs	9	791	-12,5	-6,4	-6,4
11.4	Sheep	34	3 129	-2,6	-2,6	-4,4
11.5	Poultry	4	345	6,6	-0,6	4,7
11,9	Other animals (horses)	1	82	-7,0	-5,2	-9,4
12	Animal Products	140	12 722	-20,0	-15,8	-13,0
12.1	Milk	79	7 194	-18,7	-15,0	-13,3
12.2	Eggs	52	4 760	10,6	4,0	4,0
12.9	Other animal products	8	768	-26,0	-20,2	-15,3
13	Animal Output	327	29 808	-12,6	-9,6	-10,9
14	Total Output	1000	91 049	-10,4	-3,5	-4,1

Monthly Absolute Average Price for some agriculture products

Table 4: Monthly Absolute Average Prices in euro for some major agriculture products, January – March 2010 (2005=100)

Item Code	Description	Unit	2010		
			Jan	Feb	Mar
01.1.	Wheat ¹	kg	0,15	0,16	0,16
01.3.	Barley ²	kg	0,25	0,23	0,23
01.5.	Maize ³	kg	0,18	0,18	0,18
01.2.	Rye ⁴	kg	0,28	0,28	0,26
01.4.	Oats ⁵	kg	0,30	0,27	0,25
03.9.1	Hay ⁶	kg	0,15	0,14	0,13
03.9.2	Straw ⁷	kg	0,07	0,07	0,07
03.9.9.	Lucern ⁸	kg	0,17	0,16	0,14
05.1.	Potatoes ⁹	kg	0,26	0,26	0,29
04.1.9.1	Cabbage ¹⁰	kg	0,25	0,27	.
04.1.9.6	Onion ¹¹	kg	0,60	0,80	0,63
04.1.9.9.9	Pepper ¹²	kg	.	.	.
04.1.9.3	Spinach ¹³	kg	.	.	0,97
04.1.9.7	Beans ¹⁴	kg	1,83	1,80	1,80
04.1.2	Tomatoe ¹⁵	kg	.	.	.
04.1.9.4	Cucumber ¹⁶	kg	.	.	.
04.1.9.9.9.1	Watermelon ¹⁷	kg	.	.	.
04.1.9.9.9.2	Leek ¹⁸	kg	1,04	1,04	1,11
04.1.9.9.9.3	Garlic ¹⁹	kg	2,40	2,40	2,33
06.1.1	Apple ²⁰	kg	0,47	0,43	.
06.1.2	Pear ²¹	kg	0,93	.	.
06.1.3	Chestnuts ²²	kg	1,40	.	.
06.1.9	Walnuts ²³	kg	1,79	1,79	1,79
06.1.4.1	Grape ²⁴	kg	.	1,79	1,79
11.1	Cattle ²⁵	kg	1,94	1,95	1,90
11.2	Pigs ²⁶	kg	1,95	2,09	2,09
11.4	Sheep ²⁷	kg	2,10	2,10	2,16
11.5	Chickens (wilages) ²⁸	1 pieces	7,79	7,57	7,71
11.5.1	Chickens (farms) ²⁹	1 pieces	1,89	1,93	1,93
12.1	Milk ³⁰	1 lit	0,28	0,28	0,29
12.9	Honey ³¹	kg	7,43	7,43	7,43
12.2	Eggs ³²	30 pieces	2,09	2,06	1,99

¹ (.) Shows that in these months we do not collect prices for these agriculture products (Cabbage, Pepper, Spinach, Tomatoes, Cucumber, Watermelon, Apple, Pear, Chestnuts, Grape)

1 - 1 Wheat – is domestic, 2 Barley, 3 Maize – Hybrid 448, 4 Rye, 5 Oats, 6 Hay produced in meadow, 7 Wheat straw (Stubble wheat), 8 Lucerne, 9 potatoes, 10 Cabbage (Hybrid 4 11 Onions- second quality, 12 Pepper- variety Sombork, 13 Spinach- variety Matador, 14 Beans- second quality, 15 Tomatoes- variety Arleta, 16 Cucumber- variety Cornishon, 17 Watermelon– is domestic product, 18 Leek, 19 Garlic, 20 Apple, 21 Pear, 22 Chesnuts, 23 Walnuts, 24Grape, 25 Live weight per 1kg for bulls and heifers aged 18-22 months domestic pedigree, 26 Live weight per 1kg for pigs aged 10-12 months domestic pedigree, 27 Live weight per 1kg for sheep domestic pedigree (white, mug) aged older than 12 months, 28 Chicken (Willage)– domestic (18 weeks old), 29 Chicken (farms)– domestic (18 weeks old) , 30 Milk –price for 1litre cow milk with 3.2% fat, 31 Honey domestic product, 32 Price for 30 pieces of eggs, first class of quality,

Figure 4: Absolute average prices for wheat and maize, January – December 2009 and first quarter 2010, Euro/kg.

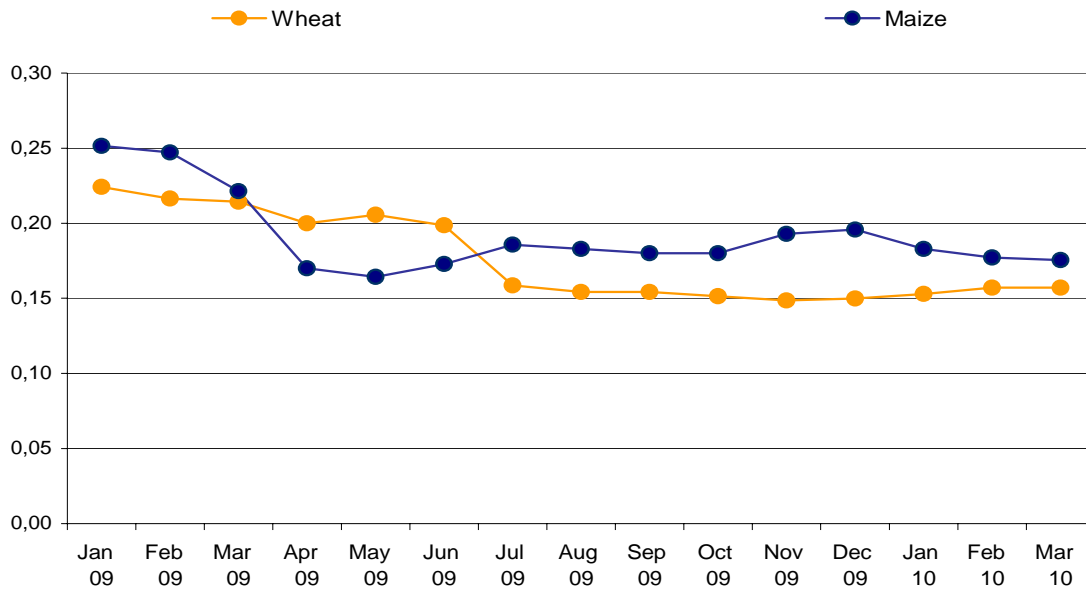


Figure 5: Absolute average prices for hay, straw and lucerne, January – December 2009 and first quarter 2010 Euro/ kg.

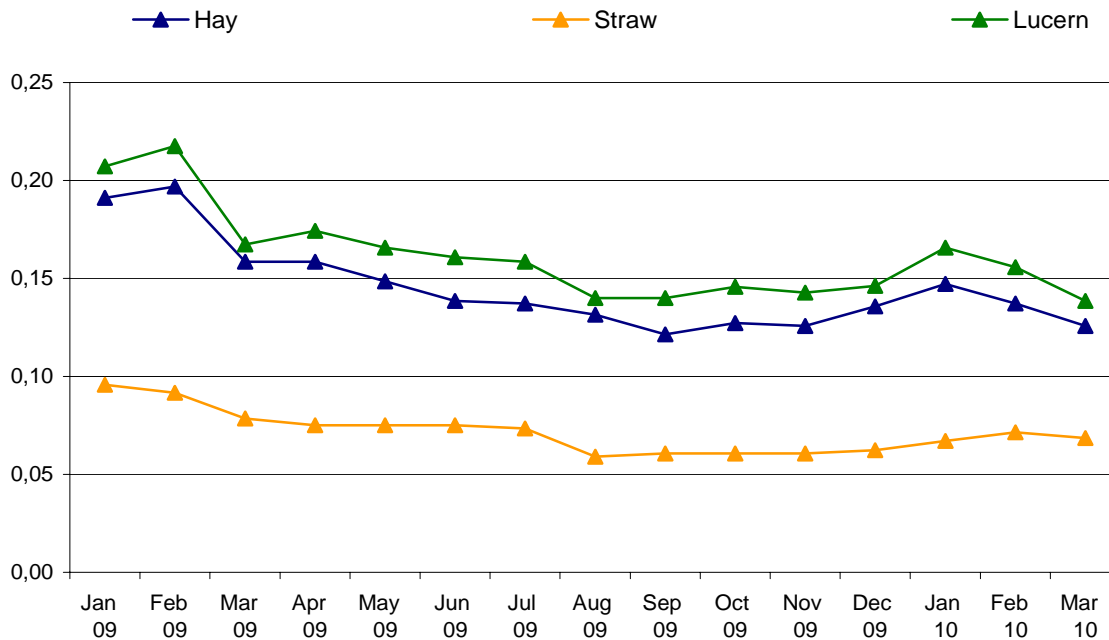


Figure 6: Absolute average prices for potatoes, tomatoes, pepper and cabbage, January – December 2009 and first quarter 2010, Euro/ kg.

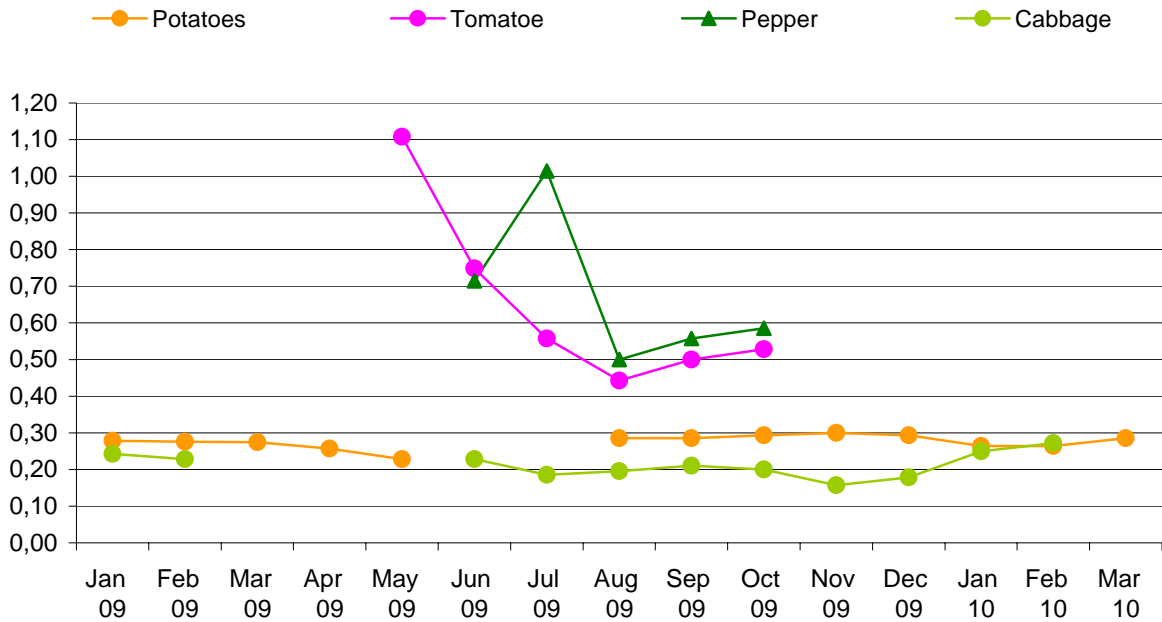
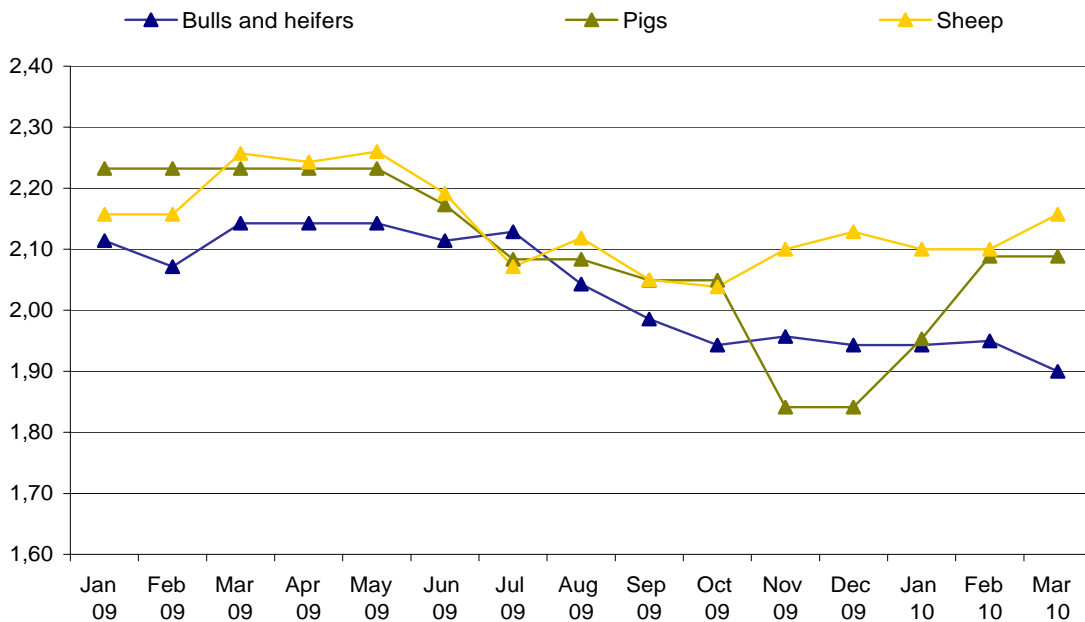


Figure 7: Absolute average prices for heifers and bulls, pigs and sheep calculated as live weight, January – December 2009 and first quarter 2010, Euro/kg



Methodology

Prices and Price indices in this publication have been calculated according standards for price statistics in European Union. The project for calculating these Prices and Price Indices was conducted in the frame of the project of “Improving agro monetary statistics” in cooperation with Statistic Sweden and with financial support by Sida (Swedish International Development Cooperation Agency).

Prices are collected in seven regions: Pristina, Mitrovica, Peja, Gjakova, Prizren, Ferizaj and Gjilan. Prices are collected around the 15th in every month. Since the start the number of different prices that are collected have increased step by step. Therefore some prices are not available for the whole period. Prices are now collected for 64 products and measures prices that farmers receive for the part of their production that are sold. Weights to calculate aggregated indices are mainly based on Agriculture Household Survey 2005, which is the base year in the indices (2005=100). It should be pointed out that the weights, in value or promille, only reflects the part of the agricultural production in Kosovo that are sold outside the agricultural household. For some products the value of the total production can be considerably higher than what is reflected in the weights.

According to EU standards, quarterly and annual indices are supposed to be calculated by each member state. The EU indices in this publication follow the methodology developed in EU. For national needs, also a monthly index is calculated. This index is calculated slightly different from the quarterly index. In short, the monthly index does not use monthly weights on aggregated level (when calculating code 10, 13 and 14). However for most crop groups (code 01, 03, 04 and 06) monthly weights are used within the group to calculate the group aggregates. On the other hand the quarterly indexes have variable quarterly weights everywhere. For this reason, the monthly and the quarterly indices might have slightly different developments if they are compared. However, the EU annual index and the Kosovo annual index are exactly the same. In both cases, the index is calculated as weighted annual index with monthly respectively quarterly weights.

The total weights, quarterly weights and monthly weights are fix during the base period. They all reflect the situation that was present in 2005. By having fix weights, the index is guaranteed only to measure price movements, which is the purpose of the index.

To compare the EU index presented in this publication with other countries, the Eurostat website is recommended (<http://epp.eurostat.ec.europa.eu/portal/page/portal/eurostat/home>).

Calculation of elementary Price Index

Calculations of elementary indices are in general done by using following formula, with un-weighted arithmetic mean price.

$$R_i^t = \frac{\frac{1}{n} \sum P_{ij}^t}{\frac{1}{n} \sum P_{ij}^o} \cdot 100$$

R_i^t – Elementary index for month t and product i

P – Collected price

i – Product i

j – Price j recorded for product (in general price for region 1,2,...,n)

t – Observed month

0 – Base month

Calculation of aggregated Price Index

Calculating aggregated index for total Output or subgroups of Output Index is done using following formula.

$$I^t = \sum \left(R_i^t \cdot \frac{w_i^0}{\sum w_i^0} \right)$$

- I^t – Aggregated index for period t
- w_i⁰ – Weighting factor in base period for product i
- i – Product i
- t – Observed month
- 0 – Base month

Questionnaire

Target definition

Item number	Item name				Quantity	Unit
Price Collector				Collection place/ Company		
Date						
Price						

Enumerators notes

- Detailed description of specific variety selected for re-pricing
- Changes in the detailed description, date for changes
- Treatment of quality change when description changed (information of over-lap Price observation, alt. valuation of quality change)

Statistical Office of Kosovo, a brief description

The Statistical Office of Kosovo (SOK) is a professional office operating since 1948. The SOK passed through some of the historic phases and it has been structured by the state rule of that time. SOK restarted its work on August 2, 1999, as an independent and professional office working in the frames of the Ministry of Public Services (MPS). SOK is financed by the Kosovo Consolidated Budget and by donors for the various projects.

The Statistical Office of Kosovo acts pursuant the UNMIK Regulation 2001/14 that entered into force on July 2, 2001. A medium-term Master Plan is being developed for the statistical system of Kosovo compatible with the European Statistics.

The SOK Organization Structure; composes of four departments for production of statistics (Department of Economic Statistics and National Accounts, Department of Population Statistics, Department of Social Statistics and Department of Agricultural and Environment Statistics), seven Regional Offices (located in Gjakova, Gjilan, Mitrovica, Peja, Prizren, Pristina and Ferizaj), two support departments (Department of Methodology and Information Technology, and Department of Administration), as well as the Office of the Population Census.

Total number employees is 134, of them 96 (71.6%) within the SOK offices whilst 38 (28.4%) in regional offices.

There is also a support and cooperation with the international institutions.

The Statistical Office of Kosovo covers Kosovo entirely. For implementation of the surveys in the field, the SOK uses appropriate sampling and methodology approach. In the collection of the reports from the reporting units, the SOK engages professionals, technicians, administrators and civilians form the local offices and regional field population census.

Recently, a team of national and international experts is working in the project of the population census.

SOK Mission is to fulfill the needs of the users with the reliable statistical data and with regular analyses in order to support and provide government departments with the proper information for decision-making process including other users as well.

- **Address: Statistical Office of Kosovo, Str. Zenel Salihu, No. 4, Pristina**
- **Telephones:**
Head-Quarters: +381 (0) 38 235 111
Director: +381 (0) 38 235 545
- **Fax: +381 (0) 38 235 033**
- **E-mail: agriculture@ks-gov.net**
- **Web-site: www.ks-gov.net/esk**